

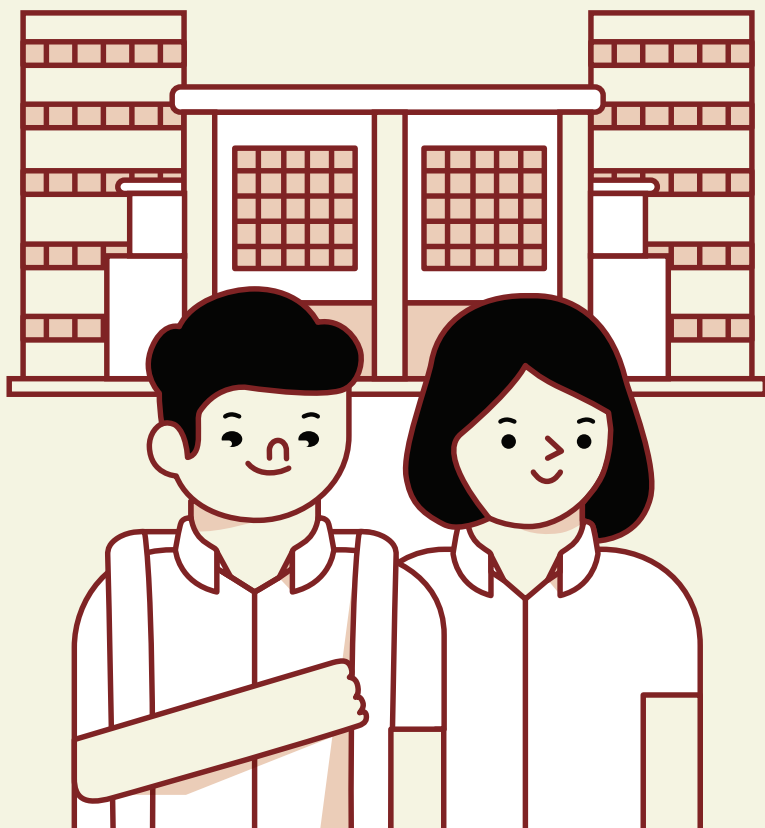
A Guide to

Post-Secondary

Admissions

Exercises

The various pathways you could explore after secondary school that provide opportunities for continuous learning



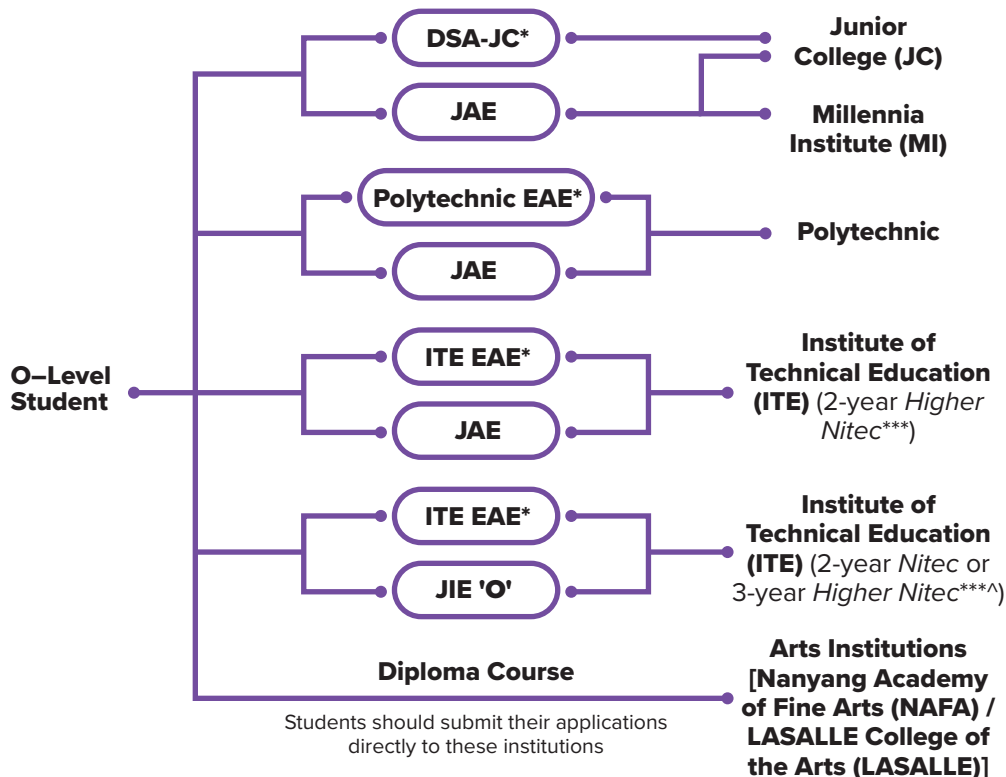
Ministry of Education
SINGAPORE

Admissions Exercises for O-Level Students

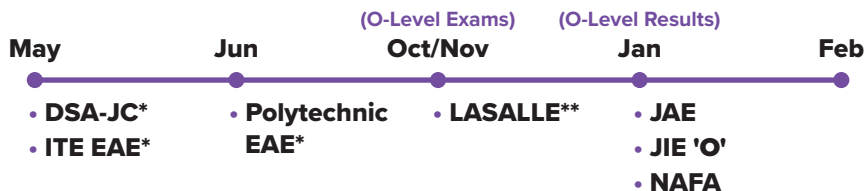
Where am I now?

What can I apply for?

Where do I want to go?



When can I apply?



*Students can apply through these admissions exercises before their O-Level examinations

**Application to LASALLE's diploma programmes starts from September.

***Certain *Nitec* and *Higher Nitec* courses are available in traineeship mode. For more information on applying to these courses, you can visit [here](#).

^For the list of 3-year Higher Nitec courses, please visit [here](#).

Details of Admissions Exercises

Arts Institutions – NAFA/ LASALLE

GCE O-Level holders with the aptitude and interest to pursue the creative arts at the tertiary level may apply for diploma programmes at the Arts Institutions (AIs). Each AI runs its own admissions exercise, and interested students should apply directly to the institution.

NAFA: go.gov.sg/applynafa

LASALLE: go.gov.sg/applylasalle

DSA-JC – Direct School Admission for Junior Colleges

DSA provides students with the opportunity to seek admission to JCs based on a broader range of talents and achievements.



go.gov.sg/applyjcdsa

ITE EAE – ITE Early Admissions Exercise

ITE EAE is an aptitude-based admissions exercise that allows students to apply and receive conditional offers for admission to ITE based on their aptitude and interest, prior to receiving their final O-Level examination results. It allows students to demonstrate their aptitudes and interests apart from academic grades, thus allowing a wider range of talents to be recognised.



go.gov.sg/iteeae

JAE – Joint Admissions Exercise

JAE enables GCE O-level holders to apply for admissions to courses offered by JCs, MI, Polytechnics and ITE 2-year *Higher Nitec*.



go.gov.sg/applyjae

JIE 'O' – Joint Intake Exercise 'O'

The JIE 'O' is conducted to enable GCE O-Level holders to apply for the 2-year *Nitec* or 3-year *Higher Nitec* courses conducted by ITE.



go.gov.sg/applyjie

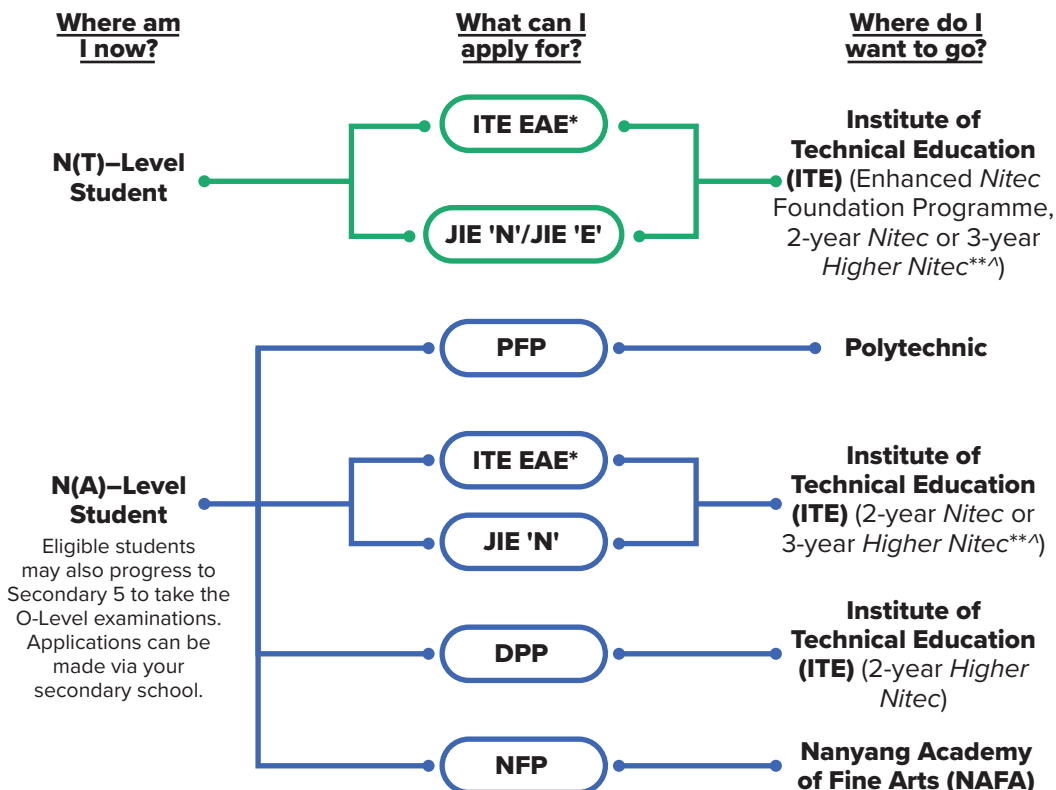
Polytechnic EAE – Polytechnic Early Admissions Exercise

Polytechnic EAE is an aptitude-based admissions exercise that allows students to apply for and receive conditional offers for admission to polytechnics prior to receiving their final grades. It allows students to demonstrate their aptitudes and interests apart from academic grades, thus allowing a wider range of talents to be recognised.

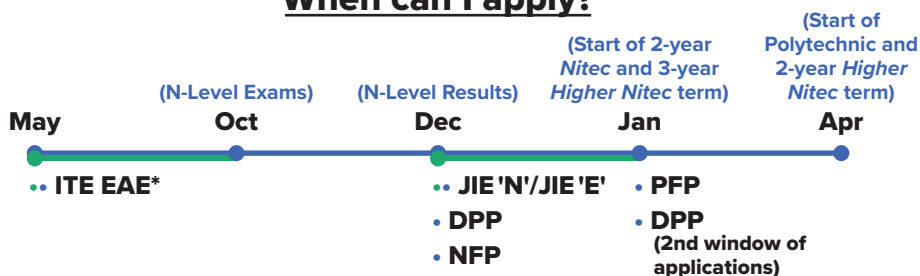


go.gov.sg/polyeae

Admissions Exercises for N-Level Students



When can I apply?



*Students can apply through these admissions exercises before their examinations.

**Certain *Nitec* and *Higher Nitec* courses are available in traineeship mode.

For more information on applying to these courses, you can visit [here](#).

^For the list of 3-year *Higher Nitec* courses, please visit [here](#).

Details of Admissions Exercises

DPP – Direct-Entry-Scheme to Polytechnic Programme

DPP allows Secondary 4N(A) students to be admitted directly into selected 2-year *Higher Nitec* programmes at ITE without having to sit for the O-Level examinations or undergo a *Nitec* programme. DPP students who successfully complete their *Higher Nitec* courses at ITE and attain the required qualifying Grade Point Average (GPA) scores are guaranteed a place in a polytechnic diploma course mapped to their *Higher Nitec* course.



go.gov.sg/applydpp

JIE 'N'/JIE 'E' – Joint Intake Exercise

The JIE 'N' is for 2-year *Nitec* or 3-year *Higher Nitec* courses offered by ITE.

The JIE 'E' is for GCE N(T) students to apply for the 3-year *Nitec* course with Enhanced *Nitec* Foundation Programme.



go.gov.sg/applyjie

ITE EAE – ITE Early Admissions Exercise

ITE EAE is an aptitude-based admissions exercise that allows students to apply and receive conditional offers for admission to ITE based on their aptitude and interest, prior to receiving their final GCE N-Level examination results. It allows students to demonstrate their aptitudes and interests apart from academic grades, thus allowing a wider range of talents to be recognised.



go.gov.sg/iteeae

NFP – NAFA Foundation Programme

NFP is a one-year practice-based programme that prepares N(A)-Level holders to pursue a diploma in the creative arts. NFP students who successfully complete the programme will be offered a place in their chosen diploma course at NAFA.



go.gov.sg/applynafafp

PFP – Polytechnic Foundation Programme

PFP is a one-year programme that offers a practice-oriented curriculum taught by polytechnic lecturers to better prepare polytechnic-bound Secondary 4 N(A) students for entry into selected polytechnic diploma courses. PFP students are given provisional places in diploma programmes, subject to them passing all modules in the 1-year PFP.



go.gov.sg/pfp

For more information, visit:

CourseFinder	go.gov.sg/cf
SchoolFinder	go.gov.sg/sf-jcmi
Polytechnics:	go.gov.sg/apply-np go.gov.sg/apply-nyp go.gov.sg/apply-rp go.gov.sg/apply-sp go.gov.sg/apply-tp
ITE:	go.gov.sg/applyite
LASALLE:	go.gov.sg/applylasalle
NAFA:	go.gov.sg/applynafa
NUS:	go.gov.sg/applynus
NTU:	go.gov.sg/applyntu
SMU:	go.gov.sg/applysmu
SUTD:	go.gov.sg/applysutd
SIT:	go.gov.sg/applysit
SUSS:	go.gov.sg/applysuss
SkillsFuture Work-Study Programmes:	go.gov.sg/applyworkstudy

